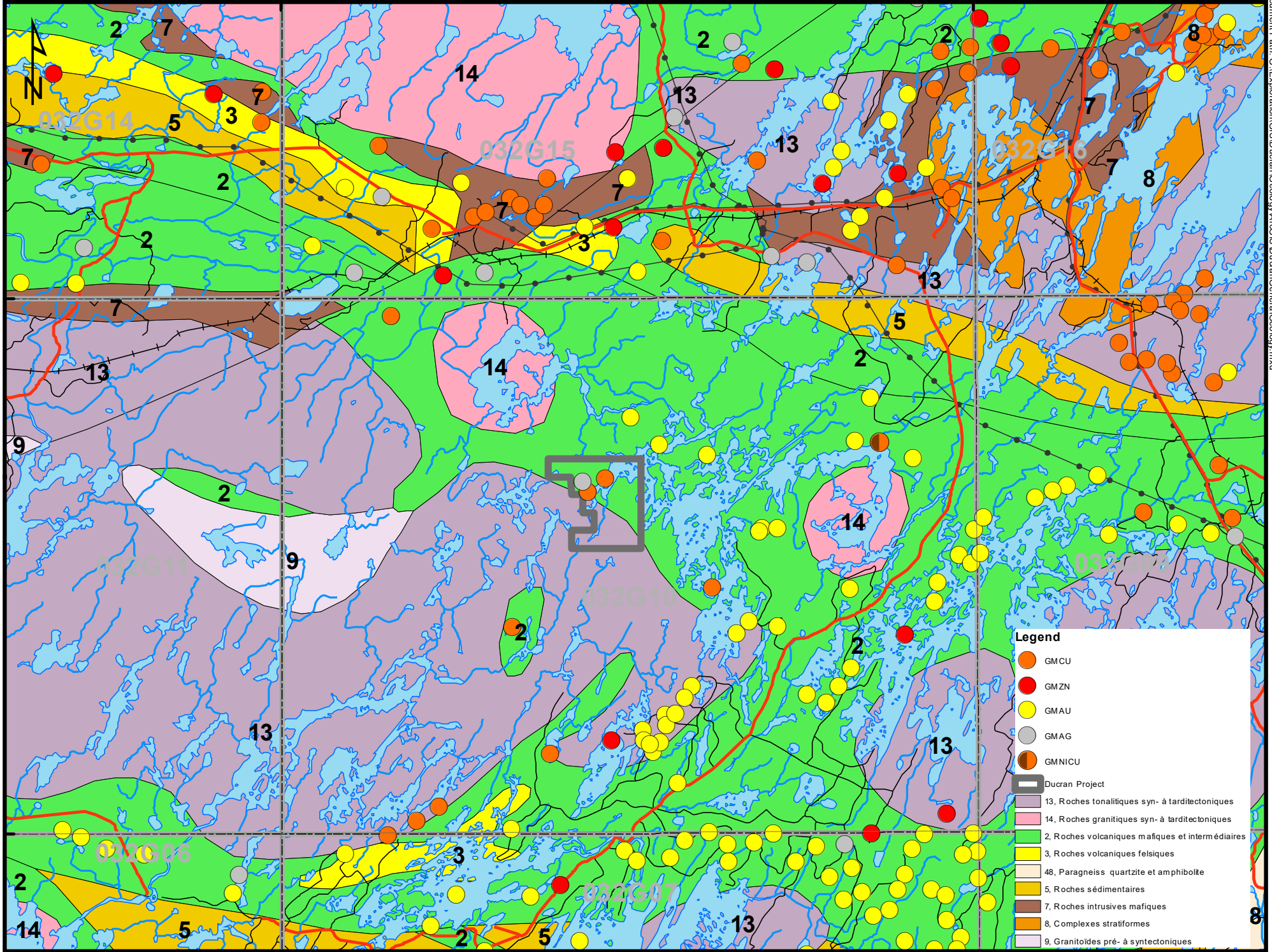


75°0'W

74°30'W

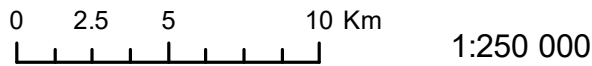
49°45'N

49°30'N



Legend

- GMCU
- GMZN
- GMAU
- GMAG
- GMNICU
- Ducran Project
- 13, Roches tonalitiques syn- à tarditectoniques
- 14, Roches granitiques syn- à tarditectoniques
- 2, Roches volcaniques mafiques et intermédiaires
- 3, Roches volcaniques felsiques
- 48, Paragneiss quartzite et amphibolite
- 5, Roches sédimentaires
- 7, Roches intrusives mafiques
- 8, Complexes stratiformes
- 9, Granitoides pré- à syntectoniques



Coordinate System: NAD 1983 UTM Zone 18N
 Projection: Transverse Mercator
 Datum: North American 1983
 False Easting: 500 000.0000
 False Northing: 0.0000
 Central Meridian: -75.0000
 Scale Factor: 0.9996
 Latitude Of Origin: 0.0000
 Units: Meter

**DUCRAN PROJECT
GENERAL GEOLOGY**

Document Path: G:\Exploration\GIS\Ducran\Geology\A\03\SU\DucranGeneralGeology.mxd

Date: 2017-10-04